

VISIBLE LIGHT EMITTING DIODE

DATA SHEET

MODEL NO: GT5-3Y07D15G

REV. : 2.0

DATE : 11-MAY.-2009

■ DESCRIPTIONS:

- 5mm Round lamp
- Lens color: Yellow Diffused
- Emitting Color: Yellow
- No Stopper
- Dice Material: AlGaInP



■ APPLICATIONS:

- TV set
- Monitor
- Telephone
- Computer
- circuit board

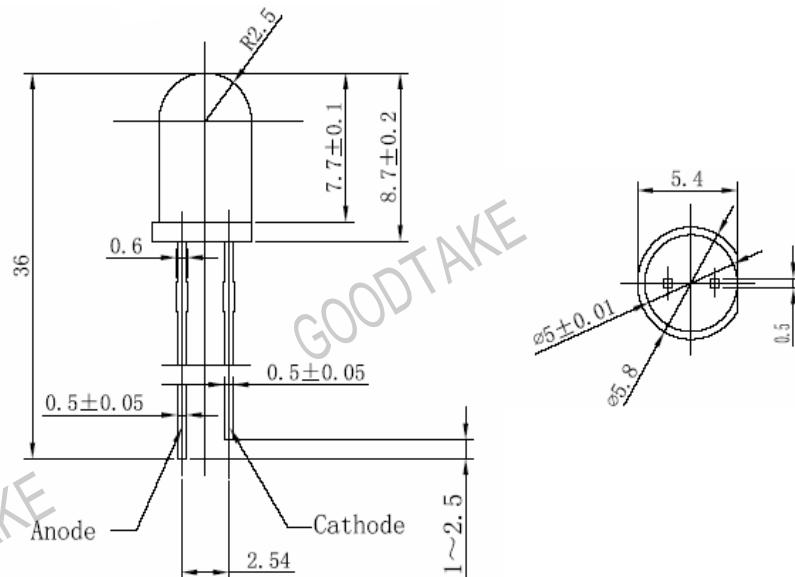
■ ABSOLUTE MAXIMUM RATINGS (Tamb=25,unless otherwise specified)

Parameter	Test condition	Symbol	Ratings	Unit
Forward Current		IF	30	mA
Power Dissipation		PD	70	mW
Peak Forward Current	tp/T=0.1,tp=100μs	IFP	100	mA
Reverse voltage		VR	5	V
Operating Temperature		Topr	-40~+85	°C
Storage Temperature		Tstg	-40~+100	°C
Soldering Temperature		Tsol	260°C for 5 sec Max (2mm from Body)	

Basic Characteristics($T_{amb}=25$, unless otherwise specified)

Parameter	Symbol	Min.	Type	Max.	Unit	Test Condition
Forward Voltage	VF		2.1	2.5	V	IF=20mA
Luminous Intensity	Iv	200		400	mcd	IF=20mA
Reverse Current	IR			80	μ A	VR=5V
Peak Wavelength	λ_p		585		nm	IF=20mA
Dominant Wavelength	λ_p	582		590	nm	IF=20mA
View Angle	$2\theta_{1/2}$		20		deg	IF=20mA

● **Dimensions:**



- NOTE:**
1. All dimensions are in millimeter, tolerance is ± 0.5 unless otherwise noted.
 2. Epoxy meniscus extends ≤ 1 mm down to the lead is allowed.

■ **Typical electro-optical characteristics curves**

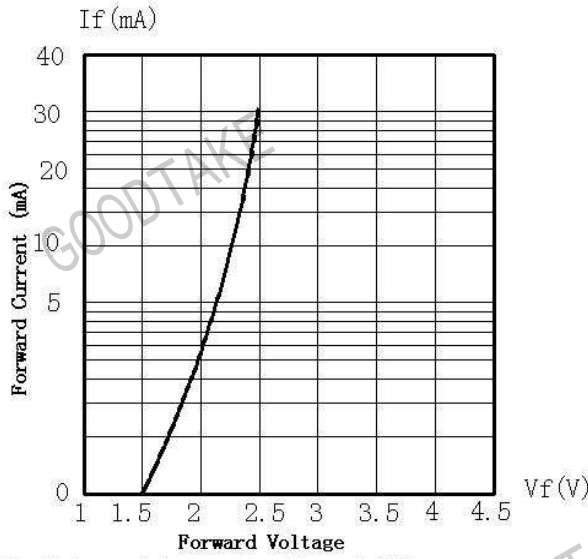


Fig. 1 forward Current vs. Forward Voltage

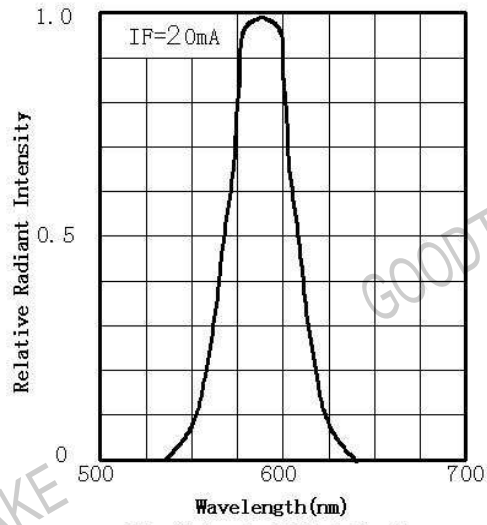


Fig. 2 Spectral Distribution

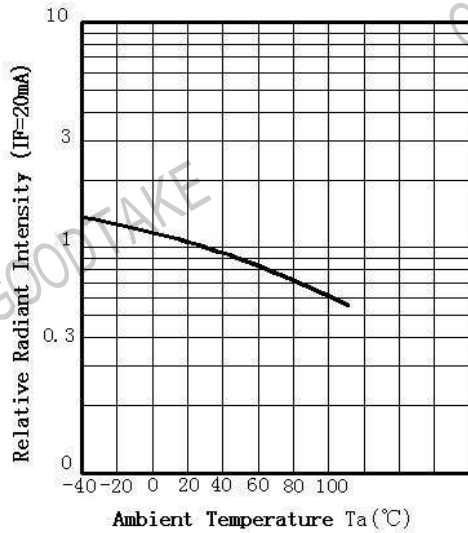


Fig. 3 Ambient Radiant Intensity Vs Ambient Temperature

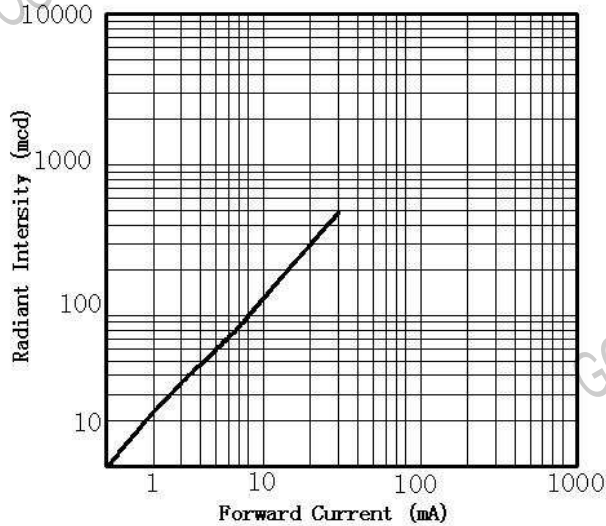


Fig. 4 Forward Current Vs Radiant Intensity

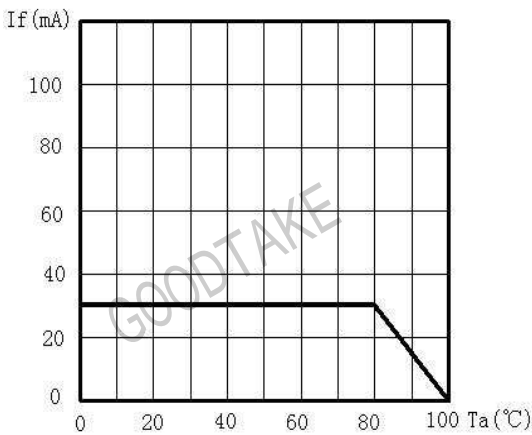


Fig. 5 Maximum Forward Current Vs Ambient Temperature

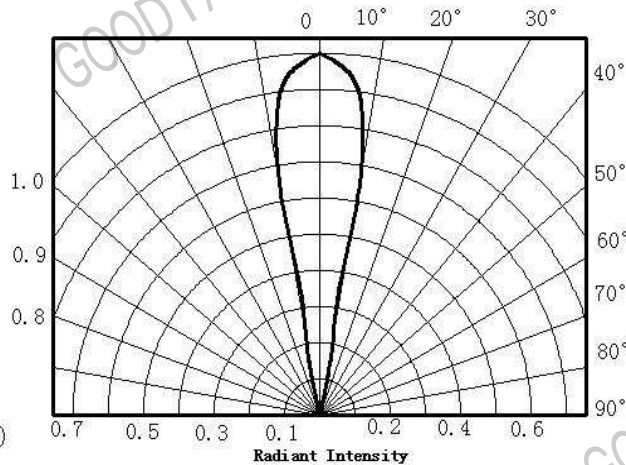


Fig. 6 Angle Vs Radiant Intensity